

# ASUS WL-5XX Series Wireless Router Internet Configuration

## User's Guide

---

## Contents

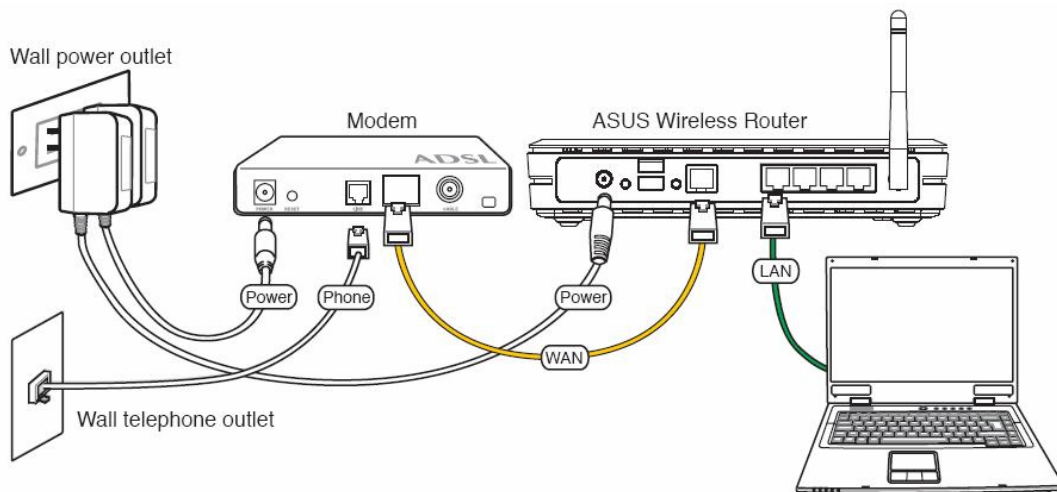
Chapter 1	Introduction:.....	1
Chapter 2	Connecting the wireless router.....	1
Chapter 3	Getting to know your Internet connection type .....	1
Chapter 4	Configuring the router.....	2
4.1	Enter into router's Web-based configuration page .....	2
4.2	WAN Connection Type ---- Automatic IP .....	3
4.3	WAN Connection Type ---- Static IP .....	4
4.4	WAN Connection Type ---- PPPOE .....	5
4.5	WAN Connection Type ---- PPTP .....	7
4.6	WAN Connection Type ---- BigPond. ....	9
Chapter 5	Troubleshooting .....	9

## Chapter 1 Introduction:

This document describes how to set up ASUS WL-5XX series wireless router to getting connection to the Internet and provides troubleshooting tips to help you fix some simple problems.

## Chapter 2 Connecting the wireless router

The figure below illustrates a connection diagram example.



## Chapter 3 Getting to know your Internet connection type

The router supports following connection types: Automatic IP, Static IP, PPPOE, PPTP, and Bigpond

- ✧ By default, the Router's Internet Connection Type is set to Automatic IP, which should be kept only if your ISP (Internet Service Provider) supports DHCP (Dynamic Host Configuration Protocol) or you are connecting through a dynamic IP address.
- ✧ If your ISP has assigned you a permanent, fixed (static) IP address for your

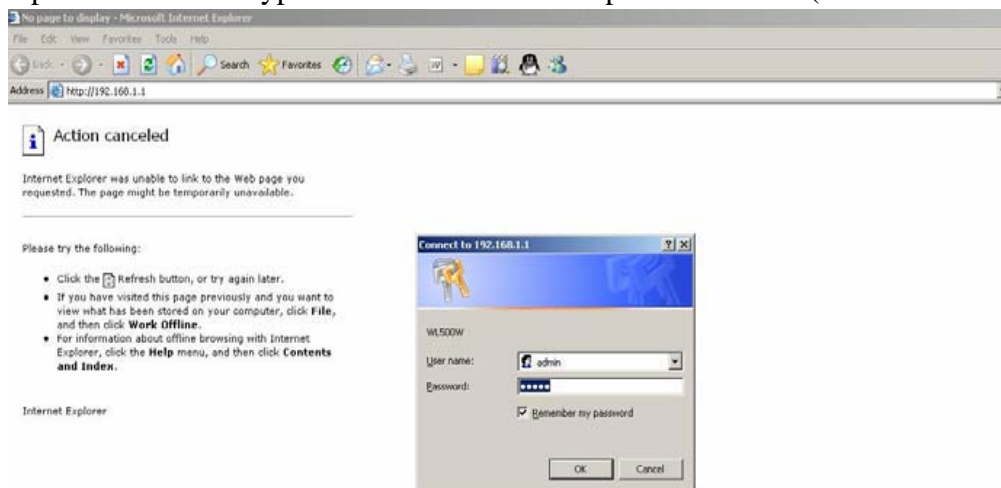
computer, select “Static IP”. In this type, you should have a static IP address from your ISP, and Subnet mask, Gateway IP address are necessary.

- ✧ Most of DSL-based ISPs use PPPoE (Point-to-Point Protocol over Ethernet) to establish Internet connections, select “PPPOE”. If you are connected to the Internet through a DSL line, check with your ISP to see if they use PPPoE. In this type, you should have Username and Password from your ISP.
- ✧ Point to Point Tunneling Protocol (PPTP), is a service that usually applies to connections in some European countries only. In this type, you should have IP address, Subnet mask, Default Gateway, Username and Password from your ISP.
- ✧ BigPond is a service used in Australia only. If you are using a Bigpond connection, check with your ISP for the necessary setup information.

## Chapter 4 Configuring the router

### 4.1 Enter into router’s Web-based configuration page

1. Open browser and type router’s IP address: http://192.168.1.1 (the default address)



**NOTE:** If you are using WL-530g, make sure that WAN port is securely plugged in with a network cable so that you are able to login the router.

2. Input username and password, both of them: **admin** (the default value)
3. Click “Cancel” when show “do you like to start Quick Setup directly” (if you want to use Quick Setup, please refer to manual or Quick Start Guide’s

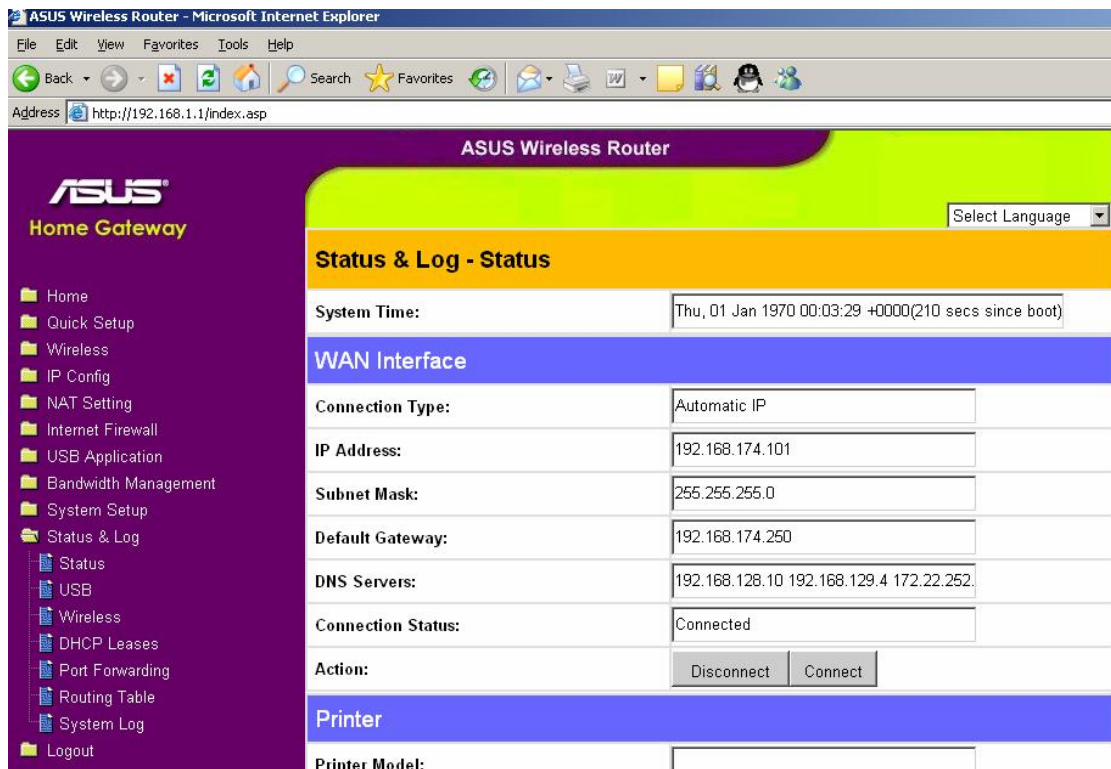
description).

## 4.2 WAN Connection Type ---- Automatic IP

1. Click **IP config** → Select WAN Connection Type as **Automatic IP**.

2. Then click **Apply**.
3. Set other configuration if you want (this part you could read manual for details), then click **Finish**.
4. Click **Save & Restart** to save and activate your settings.

5. Please wait until home page of router shows up, if the home page didn't show, you could choose **Refresh** to return.
6. Check if the WAN interface gets a dynamic IP address and related information. Click **Status & Log** → **Status**, **WAN interface** will show WAN information.



## 4.3 WAN Connection Type ---- Static IP

1. Click **IP config** → Select WAN Connection Type as **Static IP**.



2. Configure WAN IP and DNS Setting → Input IP Address, Subnet Mask, Default Gateway and DNS Server provided by your ISP. The example in the figure below is for reference.

WAN Connection Speed:	Auto negotiation
<b>WAN IP Setting</b>	
IP Address:	192.168.2.18
Subnet Mask:	255.255.255.0
Default Gateway:	192.168.2.1
<b>WAN DNS Setting</b>	
Get DNS Server automatically?	<input type="radio"/> Yes <input checked="" type="radio"/> No
DNS Server1:	192.168.2.80
DNS Server2:	

3. Then click **Apply**.
4. Set other configuration if you want (this part you could read manual for details), then click **Finish**.
5. Click **Save & Restart** to save and activate your settings.
6. Please wait until home page of router shows up, if the home page didn't show, you could choose **Refresh** to return.

## 4.4 WAN Connection Type ---- PPPOE

1. Click **IP Config** → Select WAN Connection Type as **PPPOE**.

<b>IP Config - WAN &amp; LAN</b>	
WL500W supports several connection types to WAN. These types are selected from the drop-down menu beside WAN Connection Type. The setting fields will differ depending on what kind of connection type you select.	
WAN Connection Type:	PPPoE
WAN Connection Speed:	Auto negotiation
<b>WAN IP Setting</b>	
IP Address:	
Subnet Mask:	
Default Gateway:	
<b>WAN DNS Setting</b>	
Get DNS Server automatically?	<input checked="" type="radio"/> Yes <input type="radio"/> No
DNS Server1:	

2. Configure “PPPoE Account” → Input User Name, Password that provided by your ISP

ASUS Wireless Router - Microsoft Internet Explorer

Address: http://192.168.1.1/index.asp

ASUS Wireless Router

Select Language

DNS Server1: [ ]

DNS Server2: [ ]

PPPoE or PPTP Account

User Name: adsl354687

Password: [ ]

Idle Disconnect Time in seconds(option): 1800  Tx Only

MTU: 1492

MRU: 1492

Service Name(option): [ ]

Access Concentrator Name(option): [ ]

Enable PPPoE Relay?  Yes  No

Special Requirement from ISP

3. Then click **Apply**.
4. Some ISP may have special requirement such as Host name, in this case, please receive the information from your ISP and fill out it in the configuration page.

ASUS Wireless Router

Service Name(option): [ ]

Access Concentrator Name(option): [ ]

Enable PPPoE Relay?  Yes  No

Special Requirement from ISP

Host Name: adsl

MAC Address: [ ]

Heart-Beat Server: [ ]

LAN IP Setting

IP Address: 192.168.1.1

Subnet Mask: 255.255.255.0

Restore Finish Apply

5. Set other configuration if you want (this part you could read manual for details), then click **Finish**.
6. Click **Save & Restart** to save and activate your settings.
7. Please wait until home page of router shows up, if the home page didn't show, you could choose **Refresh** to return.
8. Check if the WAN interface gets a dynamic IP address and related information.



Click **Status & Log** → **Status**, WAN interface will show WAN information.

**Status & Log - Status**

System Time: Wed, 27 Jun 2007 04:45:43 +0000(66 secs since boot)

**WAN Interface**

WAN Type:	PPPoE
IP Address:	58.37.136.36
Subnet Mask:	255.255.255.255
Gateway:	222.72.255.201
DNS Servers:	202.109.14.5 202.96.209.5
Link Status:	Connected
Action:	<input type="button" value="Disconnect"/> <input type="button" value="Connect"/>

**LAN Interface**

## 4.5 WAN Connection Type ---- PPTP

1. Click **IP config** → select “WAN Connection Type” as **PPTP**.

**ASUS Wireless Router - Microsoft Internet Explorer**

Address: http://192.168.1.1/index.asp

**ASUS Wireless Router**

Select Language

**IP Config - WAN & LAN**

WL500W supports several connection types to WAN. These types are selected from the drop-down menu beside WAN Connection Type. The setting fields will differ depending on what kind of connection type you select.

WAN Connection Type:	PPTP
WAN Connection Speed:	Auto negotiation

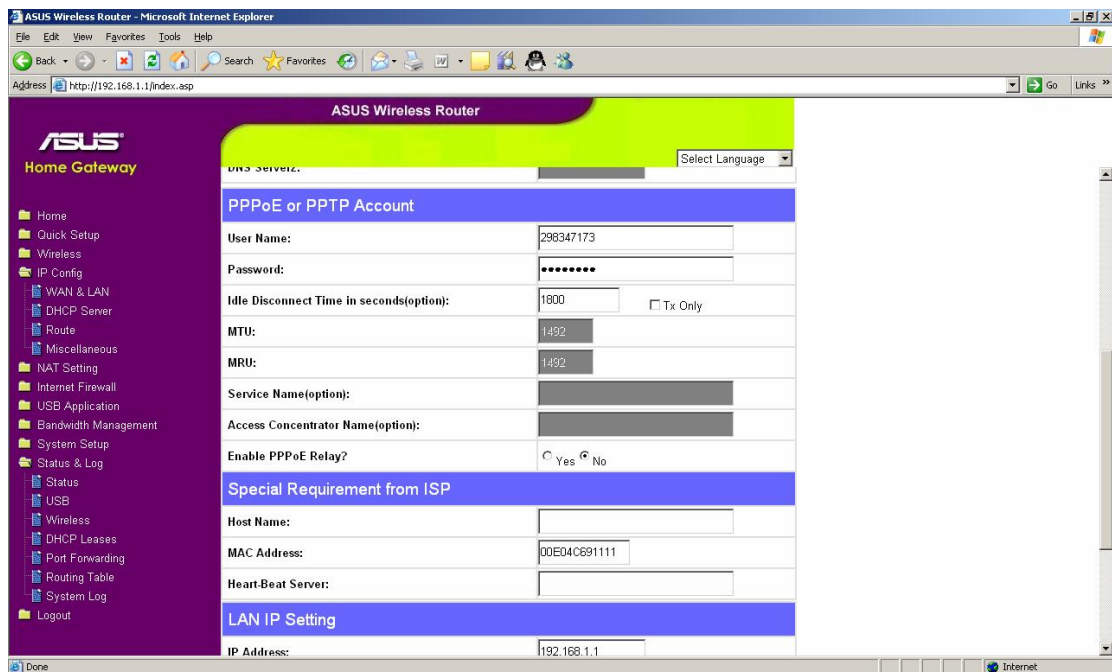
**WAN IP Setting**

IP Address:	220.13.34.56
Subnet Mask:	255.255.255.0
Default Gateway:	220.13.34.234

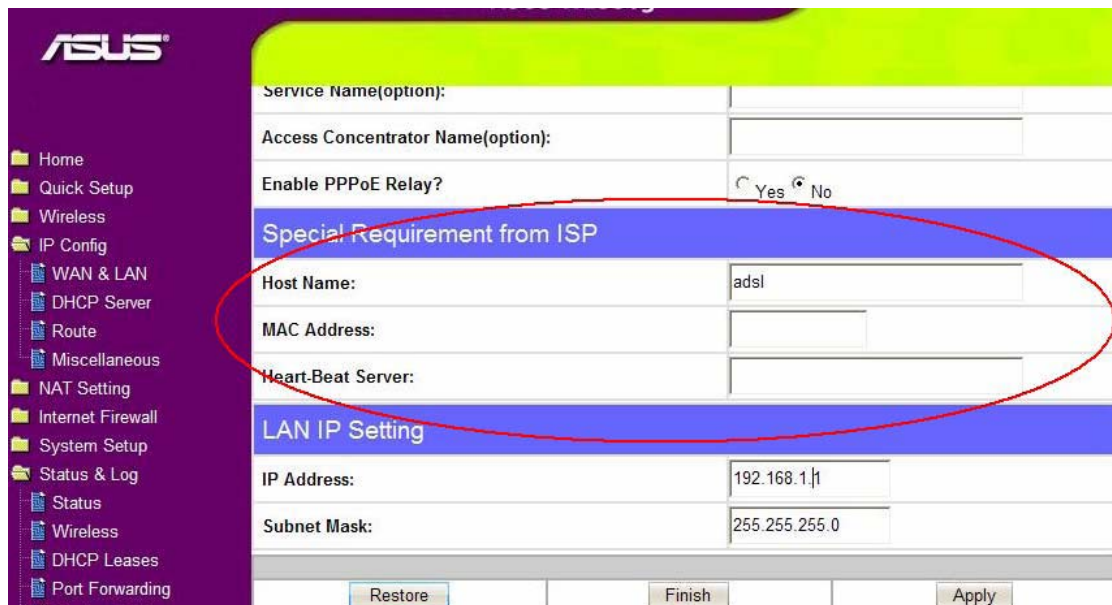
**WAN DNS Setting**

Get DNS Server automatically?	<input checked="" type="radio"/> Yes <input type="radio"/> No
DNS Server:	

2. If necessary, configure WAN IP Setting → Input IP address, Subnet Mask, Default Gateway that provided by your ISP.
3. Configure “PPTP Account” → Enter the User Name and Password provided by ISP.



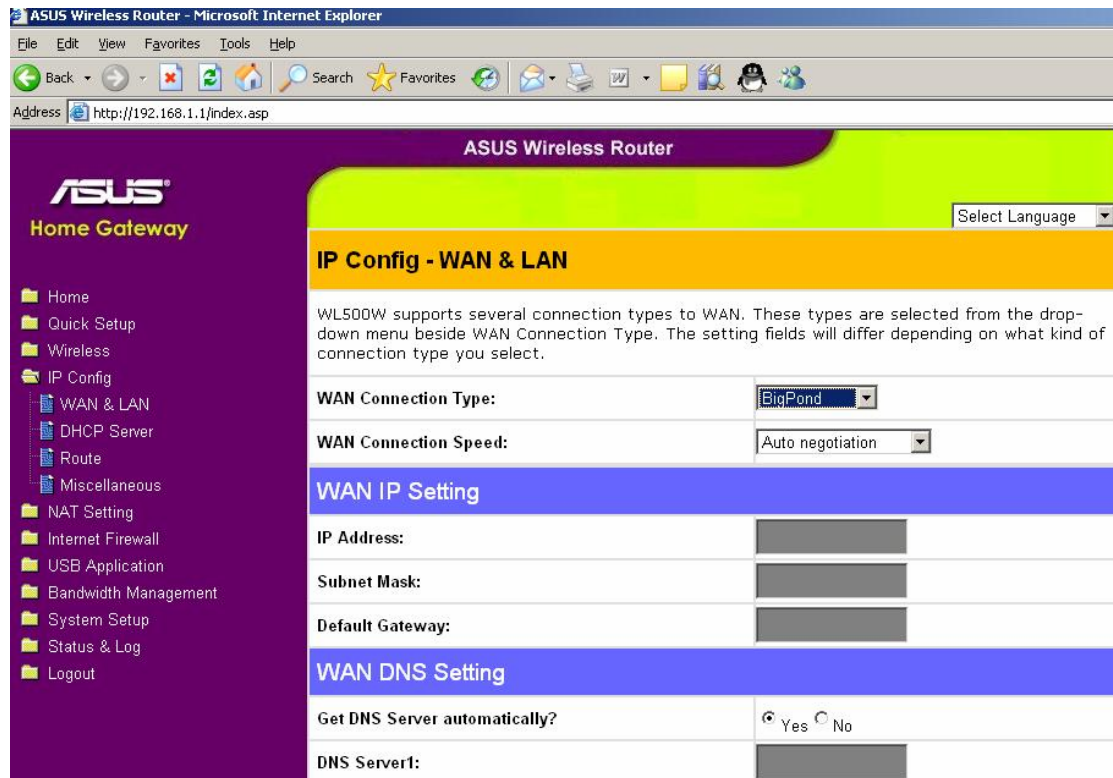
4. Then click **Apply**.
5. Some ISP may have special requirement such as Host name, in this case, please receive the information from your ISP and fill out it in the configuration page.



6. Set other configuration if you want (this part you could read manual for details), then click **Finish**.
7. Click **Save & Restart** to save and activate your settings.
8. Please wait until home page of router shows up, if the home page didn't show, you could choose **Refresh** to return.

## 4.6 WAN Connection Type ---- BigPond.

1. If you are using a BigPond connection, check with your ISP for the necessary setup information.



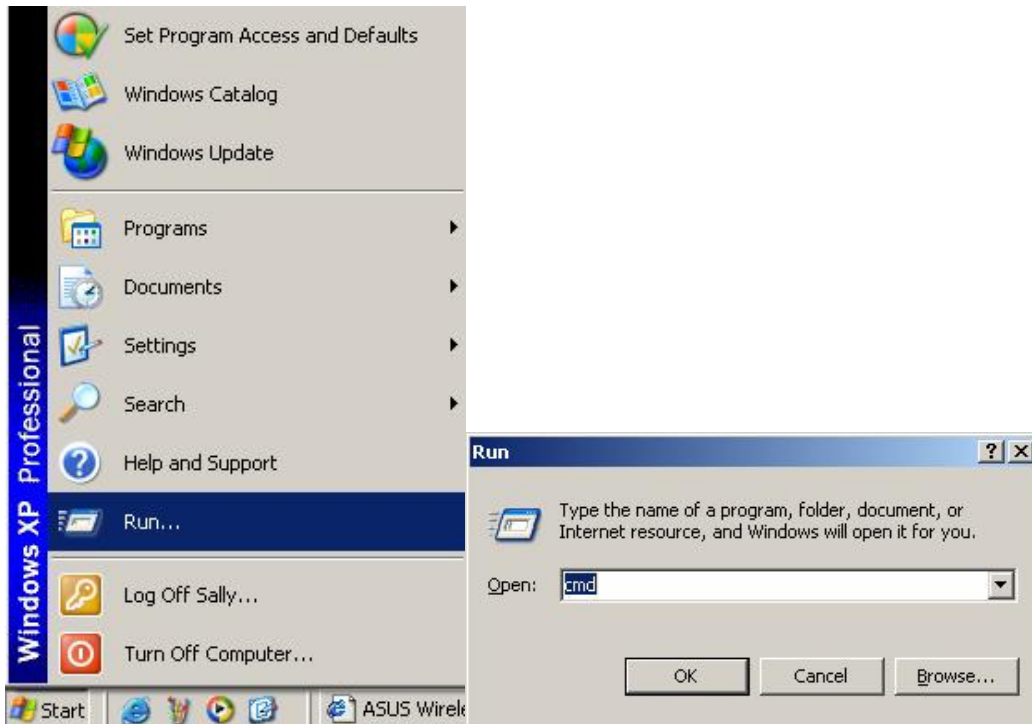
## Chapter 5 Troubleshooting

Here are some tips for correcting simple problems you may have.

- ✧ Be sure to restart your network in this sequence:
  1. Turn off the modem, wireless router, and computer;
  2. Turn on the modem, wait two minutes;
  3. Turn on the wireless router and wait 1 minute;
  4. Turn on the computer.
  
- ✧ Make sure the network cables are securely plugged in.
  - The WAN light on the wireless router will lit if the network cable to the wireless router from the modem is plugged in securely and the modem and wireless router are turned on.
  - For each powered on computer connected to the wireless router with a securely plugged in network cable, the corresponding LAN port status light will lit. The front panel of the wireless router identifies the number of each LAN port.

- ✧ Make sure the network settings of the computer are correct.
  - Some cable operators authenticate the MAC address of the computer registered on the account. The MAC address here is the physical hardware address on your computer's network adaptor. If your Internet connection doesn't work, try to clone the computer's MAC Address on the router.

1. In Windows desktop, select **Start** → **Run** → type "cmd" command.



2. Type "ipconfig/all" to show computer's Physical Address (MAC Address).

